

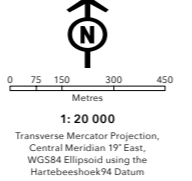
- |   |   |  |
|---|---|--|
| <ul style="list-style-type: none"> <li>● Accommodation and food service activities</li> <li>● Administrative and support service activities</li> <li>● Agriculture, forestry and fishing</li> <li>● Arts, entertainment and recreation</li> <li>● Construction</li> <li>● Education</li> <li>● Electricity, gas, steam and air-conditioning supply</li> <li>● Financial and insurance activities</li> <li>● Human health and social work activities</li> <li>● Information and communication</li> <li>● Manufacturing</li> <li>● No activity</li> </ul> | <ul style="list-style-type: none"> <li>● Other service activities</li> <li>● Professional, scientific and technical service activities</li> <li>● Public administration and defence, compulsory social security service activities</li> <li>● Real estate activities</li> <li>● Transportation and storage</li> <li>● Unattainable</li> <li>● Vacant unit</li> <li>● Water reserve</li> <li>● Water supply, sewerage, waste management and remediation activities</li> <li>● Wholesale and retail trade, repair of motor vehicles and motorcycles</li> <li>● IRT bus stops</li> </ul> | <ul style="list-style-type: none"> <li>■ Road reserve</li> <li>■ Under construction</li> <li>■ Vacant land</li> <li>■ Private residence</li> <li>■ Suburbs</li> <li>■ Land parcel</li> <li>■ Greenbelt</li> <li>■ Open space</li> <li>■ Vacant building</li> <li>■ Wetlands</li> </ul> |
|---|---|--|



**THIS MAP WAS COMPILED BY:**  
**CITY MAPS**  
 Development Information and GIS  
 Tel: +27 21 487 2711  
 Fax: +27 21 487 2821  
 city.maps@capetown.gov.za

**Please note:**

- Business names, economic activity and contact details were collected through primary data collection.
- Business contact details were verified directly from the business' website.
- In the event that the name or economic activity of a business could not be identified during primary data collection and it does not have an active website or contact details available to confirm business details, it has been listed as unattainable.



**INDUSTRIAL SURVEY**  
**STRAND INDUSTRIA**



**CITY OF CAPE TOWN**  
**ISIXEKO SASEKAPA**  
**STAD KAAPSTAD**



**INVEST CAPE TOWN**  
 COLLABORATE | ENABLE | PROMOTE

**For more information on this industrial area contact:**  
 Economic.Research@capetown.gov.za

Produced by Enterprise and Investment and  
 Organisational, Policy and Planning Departments:  
 Directorate of the Mayor



# Strand Industria | 2017

Making progress possible. Together.

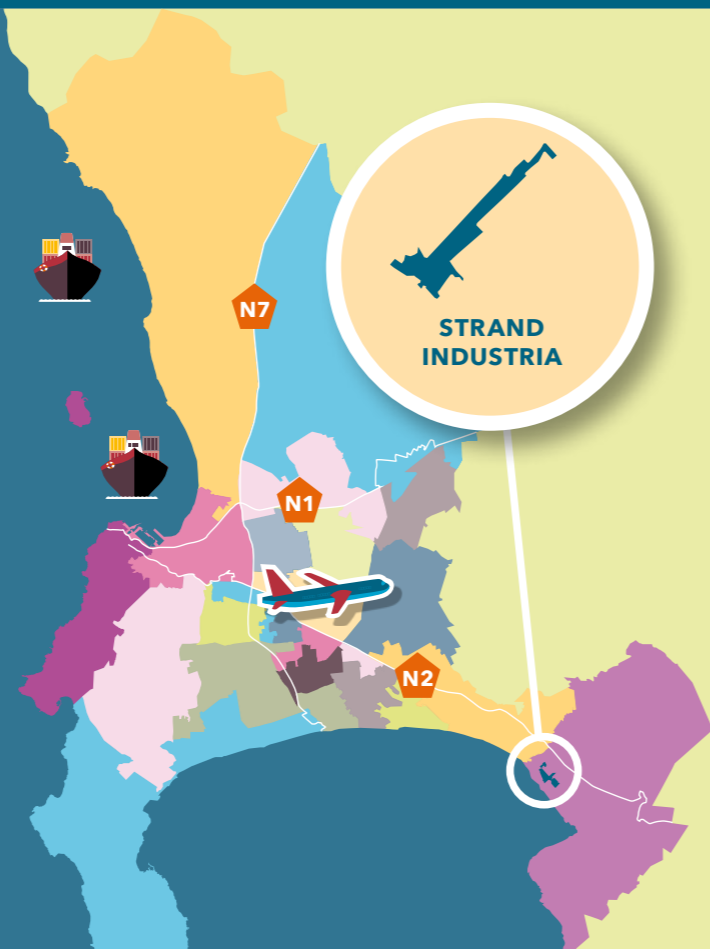
## STRAND INDUSTRIA AT A GLANCE

The Industrial node Strand Industria, otherwise known as Somerset West Industria, is situated in Somerset West and is just off the N2 highway.

Strand Industria is mapped across 442 land parcels of which 99% of these land parcels is occupied by economic activity and the remaining 1% of these land parcels is not.

The 442 land parcels in the Strand Industrial area host 642 businesses. Of the 642 businesses, 559 businesses' economic activity could be identified while 86 businesses' economic activity could not.

**442 LAND PARCELS**   **642 BUSINESSES**



## PROPERTIES AVAILABLE

**0**

VACANT LAND PARCELS

**2**

VACANT BUILDINGS

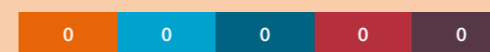
RANGE OF SQM LAND:

**0 m<sup>2</sup>**

RANGE OF SQM LAND\*:

**1 000 m<sup>2</sup> - 2 000 m<sup>2</sup>**

LAND PARCEL SIZE RANGE:



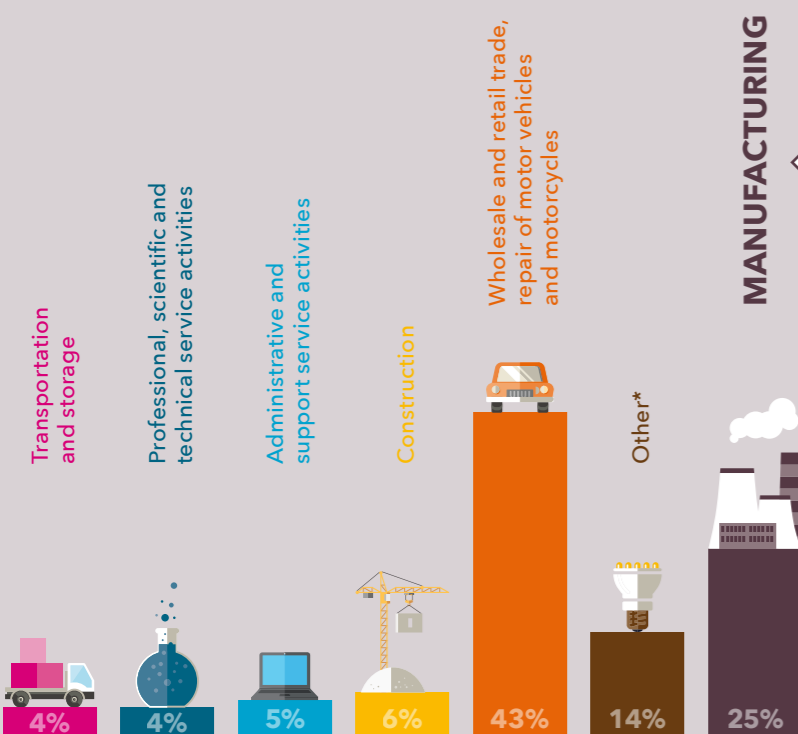
LAND PARCEL SIZE RANGE:



● 0 - 4 999 m<sup>2</sup>   ● 5 000 - 9 999 m<sup>2</sup>   ● 10 000 - 49 999 m<sup>2</sup>   ● 50 000 - 99 000 m<sup>2</sup>   ● 100 000+ m<sup>2</sup>

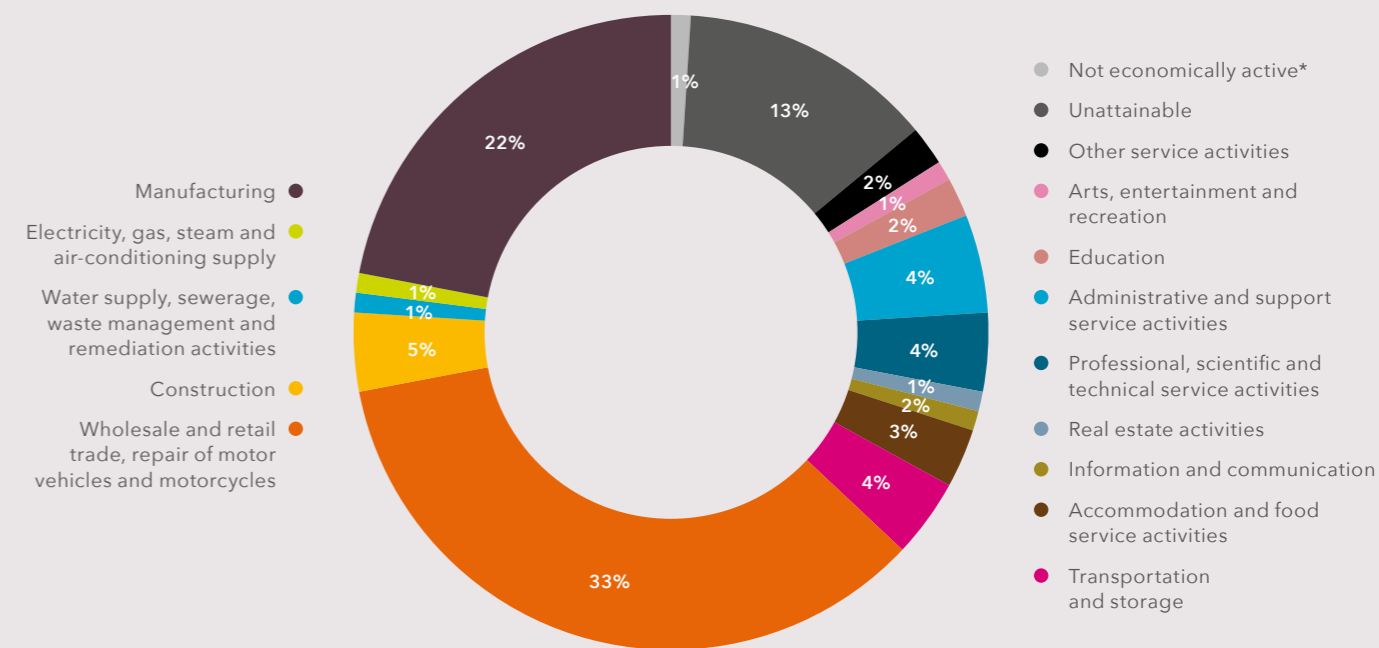
\*sqm of land parcel on which the business sits.

## ECONOMIC ACTIVITY OF BUSINESSES



Number of manufacturing businesses per division	
Basic metals	3
Beverages	1
Chemicals and chemical products	6
Electrical equipment	2
Fabricated metal products, excluding machinery and equipment	44
Food products	5
Furniture	26
Leather and related products	1
Machinery and equipment not classified elsewhere	2
Motor vehicles, trailers and semi-trailers	4
Other manufacturing	3
Other non-metallic mineral products	5
Paper and paper products	3
Printing and reproduction of recorded media	8
Repair and installation of machinery and equipment	8
Rubber and plastic products	5
Textiles	4
Wearing apparel	1
Wood and product of wood and cork, except furniture; manufacture of articles of straw and plaiting materials	10

## DISTRIBUTION OF LAND PARCEL USAGE



\*Accommodation and food service activities; Agriculture, forestry and fishing; Arts, entertainment and recreation; Education; Electricity, gas, steam and air-conditioning supply; Financial and insurance activities; Human health and social work activities; Information and communication; Other service activities; Public administration and defence, compulsory social security service activities; Real estate activities; Water supply, sewerage, waste management and remediation activities

\*Not economically active consists of 0.3% vacant building, 0.6% road reserve and 0.1% wetland.